



1 Butterfield Court, Milton Ernest, Bedford MK44 1RT



1 Butterfield Court
Milton Ernest
Bedford
MK44 1RT

Price £575,000

Large family home with
double garage...

- Detached family home
- Four bedrooms
- Cloakroom
- Living room, family room and study
- Kitchen/dining room
- Two en suites
- PVCu double glazing
- Gas central heating
- Double garage
- Part walled rear garden
- Popular local schooling

- Council Tax Band F
- Energy Efficiency Rating C



Located in the popular village of Milton Ernest...



We are delighted to bring to the market this imposing detached family home which is located in the popular village of Milton Ernest.

The house was built in 2004 and forms part of a small development of similar style properties.

The property offers very flexible accommodation with the ground floor benefiting from a large kitchen/dining room which has a large island unit and access to a study area. There is a large living room and a family room/separate dining room.

On the first floor there is a large master bedroom with an en suite bathroom with a separate shower cubicle. There is also an en suite to bedroom two with bedrooms three and four having use of the family bathroom.

Added benefits include gas central heating, PVCu double glazing, a utility room and a ground floor cloakroom.

Externally there is ample off road parking, a double garage and a part walled rear garden.

Milton Ernest is located just four and a half miles from Bedford's town centre and has fast access to Bedford, thanks to the Clapham bypass, making this property convenient for those requiring the facilities of Bedford's mainline railway station.

Milton Ernest has its own well regarded Primary School and sits within the ever popular Sharnbrook Upper School catchment area. Other local facilities include All Saints Parish Church, The Queens Head Public House and Milton Ernest Garden Centre which has its own café and Post Office.

Bedford Railway Station • 5 miles

Milton Keynes • 21 miles

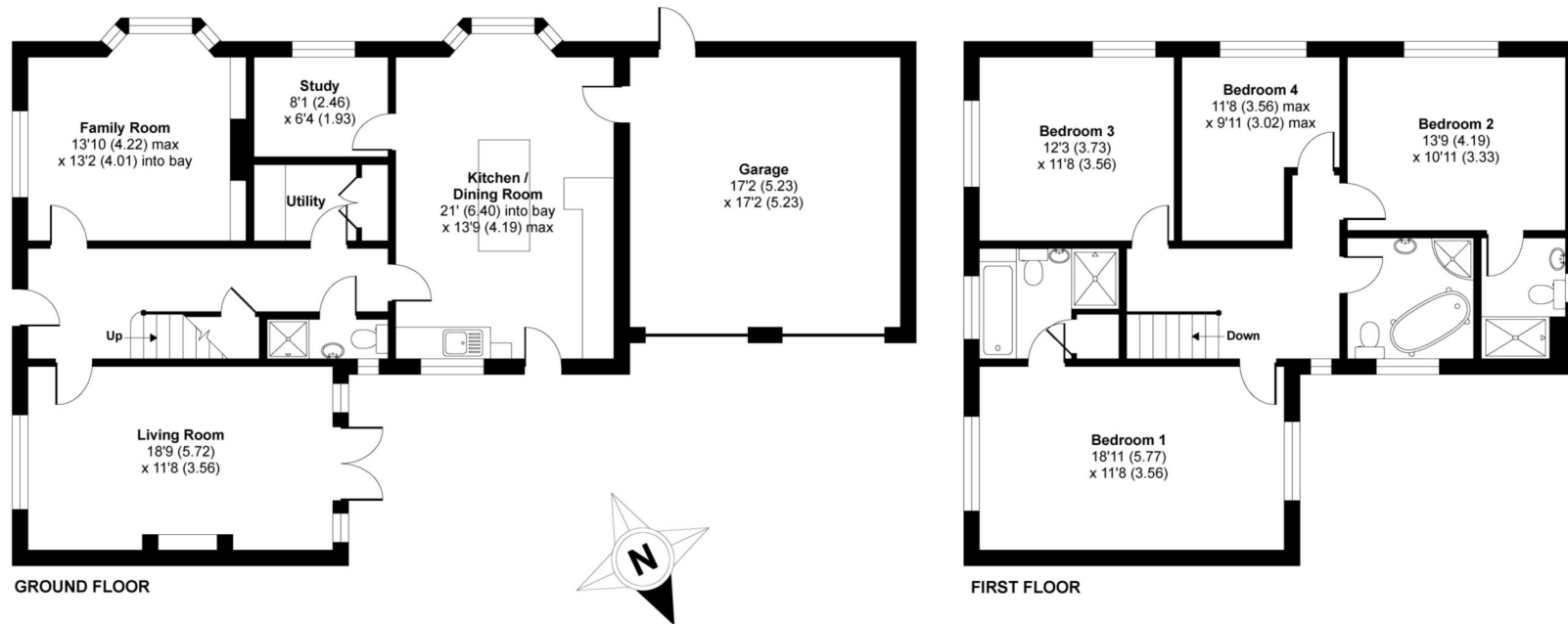
A1 Black Cat Roundabout • 13 miles

M1 Junction 13 • 16 miles



Milton Ernest, Bedford

APPROX. GROSS INTERNAL FLOOR AREA 1911 SQ FT 177.5 SQ METRES (EXCLUDES GARAGE)



Whilst every attempt has been made to ensure the accuracy of the floor plan contained here, measurements of doors, windows and rooms are approximate and no responsibility is taken for any error, omission or misstatement. These plans are for representation purposes only as defined by RICS Code of Measuring Practice and should be used as such by any prospective purchaser. Specifically no guarantee is given on the total square footage of the property if quoted on this plan. Any figure given is for initial guidance only and should not be relied on as a basis of valuation.

Copyright nichecom.co.uk 2019 Produced for Lane & Holmes ORDER NUMBER : 450920



01234 327744 | sales@laneandholmes.co.uk | www.laneandholmes.co.uk | 66-68 St. Loyes Street, Bedford, Bedfordshire MK40 1EZ

Agents Notes: The agent has not tested any apparatus, equipment, fixtures & fittings or services and so cannot verify that they are in working order or fit for the purpose. A buyer is advised to obtain verification from their solicitor or surveyor. All photographs shown are for illustration only and may depict items that are not for sale or included in the sale of the property. Please note that we have not checked the situation with regards to planning consents, building regulation consents and any other relevant consent relating to this property and therefore, any interested applicant should carry out their own enquiries with the appropriate authorities. All measurements are approximate and for guidance only. The particulars do not form part of any contract and all properties are offered subject to contract.

